

AMPERSAND: Argument Mining for PERSuAsive oNline Discussions

Tuhin Chakrabarty, Christopher Hidey, Smaranda Muresan
Kathleen Mckeown and Alyssa Hwang



Natural Language Processing
Columbia University

ARGUMENTATIVE DISCUSSION FORUM



CMV: I think the Paris shooting makes a good case for culture of responsible gun ownership.

....

I also think this would be much better than increase in police numbers and rights as policemen are a very homogeneous group trained to stick together and the danger of even deepening the "not one of us" (pack) mentality and escalation of "police state".

....



....

Those time periods/places did not enjoy lower rates of violent death. [...] but according [this study] the murder rate was "extraordinarily high by today's standard."

...

Looking at the rest of the thread, I think I see what might be a flaw in our collective logic. The incidents that stand out most in our heads are events like Paris or Aurora or Columbine- premeditated shootings with the intent of inflicting a lot of casualties.

ARGUMENTATIVE DISCUSSION FORUM



CMV: I think the Paris shooting makes a good case for culture of responsible gun ownership.

....

I also think this would be much better than increase in police numbers and rights as policemen are a very homogeneous group trained to stick together and the danger of even deepening the "not one of us" (pack) mentality and escalation of "police state".



....

Those time periods/places did not enjoy lower rates of violent death. [...] but according [this study] **the murder rate was "extraordinarily high by today's standard."**

...

Looking at the rest of the thread, **I think I see what might be a flaw in our collective logic.** **The incidents that stand out most in our heads are events like Paris or Aurora or Columbine- premeditated shootings with the intent of inflicting a lot of casualties.**

Claim
Premise

ARGUMENTATIVE DISCUSSION FORUM



CMV: I think the Paris shooting makes a good case for culture of responsible gun ownership.

....

I also think this would be much better than increase in police numbers and rights as policemen are a very homogeneous group trained to stick together and the danger of even deepening the "not one of us" (pack) mentality and escalation of "police state".

....



Those time periods/places did not enjoy lower rates of violent death. [...] but according [this study] the murder rate was "extraordinarily high by today's standard."

...

Looking at the rest of the thread, I think I see what might be a flaw in our collective logic. The incidents that stand out most in our heads are events like Paris or Aurora or Columbine- premeditated shootings with the intent of inflicting a lot of casualties.

Intra-relation
(micro-level)

Inter-relations
(macro-level)

TASK OF INTEREST

- Identify argument components in a full discussion thread
 - **Claim**
 - **Premise**

- Identify two kinds of argument relations:
 - **Inter-turn relations** (argumentative relations to support or attack the other person's argument)
 - **Intra-turn relations** (to support one's claim or premise).

CONTRIBUTIONS

- Introduce two novel distantly-labeled data-sets
- Fine-tune BERT on the distant- labeled data and demonstrate improvement
- Use discourse relations from RST for argument relations.

LABELLED DATASET STATISTICS

TOTAL NUMBER OF THREADS	112
NUMBER OF DIALOGUE TURNS	380
#CLAIM , #PREMISE #NONARGUMENT	1205 , 1536 , 799
TOTAL NO. OF INTRA-TURN RELATIONS	4.6(%) OF 27254 POSSIBLE PAIRS
TOTAL NO. OF INTER-TURN RELATIONS	3.2(%) OF 26695 POSSIBLE PAIRS

DISTANT LABELED DATA

- Challenge: small size labeled dataset
- Leverage distant-labeled data from Reddit and use transfer learning techniques
 - micro-level for intra-turn relations
 - macro-level (dialogue) for inter-turn relations.

MICRO-LEVEL CONTEXT DATA

IMHO, Calorie-counting is a crock what you have to look at is how whole- some are the foods you are eating. *Refined sugar is worse than just empty calories - I believe your body uses a lot of nutrients up just processing and digesting it.*

CLAIM & *PREMISE*

IMHO + Context Dataset (4.6 Million comments) inspired by Chakrabarty et al (2019)

MACRO-LEVEL CONTEXT DATA

REDDIT Quoting Feature

CMV: A rise in female representation in elected government isn't a good or bad thing.

...

According to this new story, a record number of women are seeking office in this year's US midterm elections. While some observers hail this phenomenon as a step in the right direction, **I don't think it's good thing one way or the other: a politician's sex has zero bearing on their ability to govern or craft effective legislation.** As such...

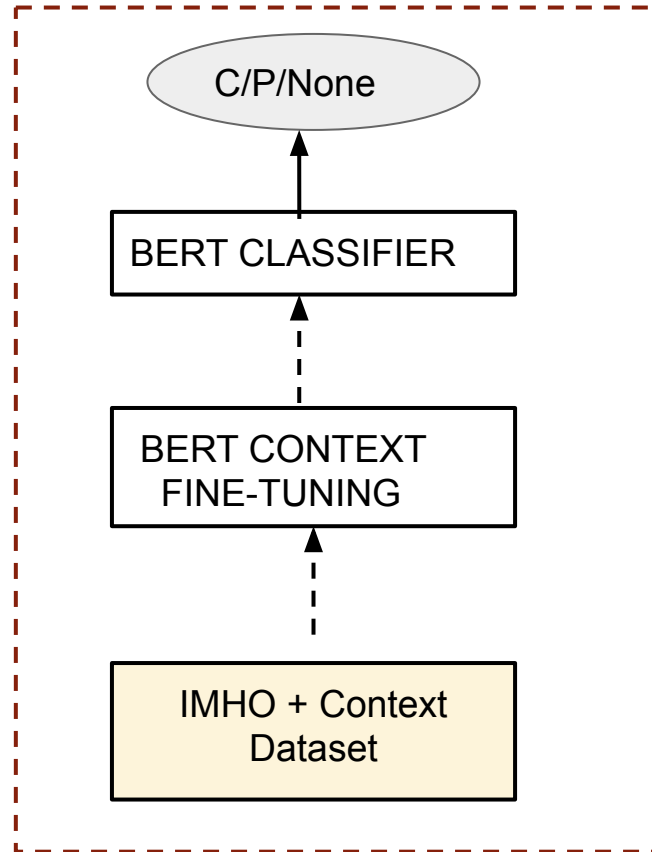
"I don't think it's good thing one way or the other: a politician's sex has zero bearing on their ability to govern or craft effective legislation"

Nobody is saying that women are better politicians than men, and thus, more female representation is inherently better for our political system. Rather, the argument is that...

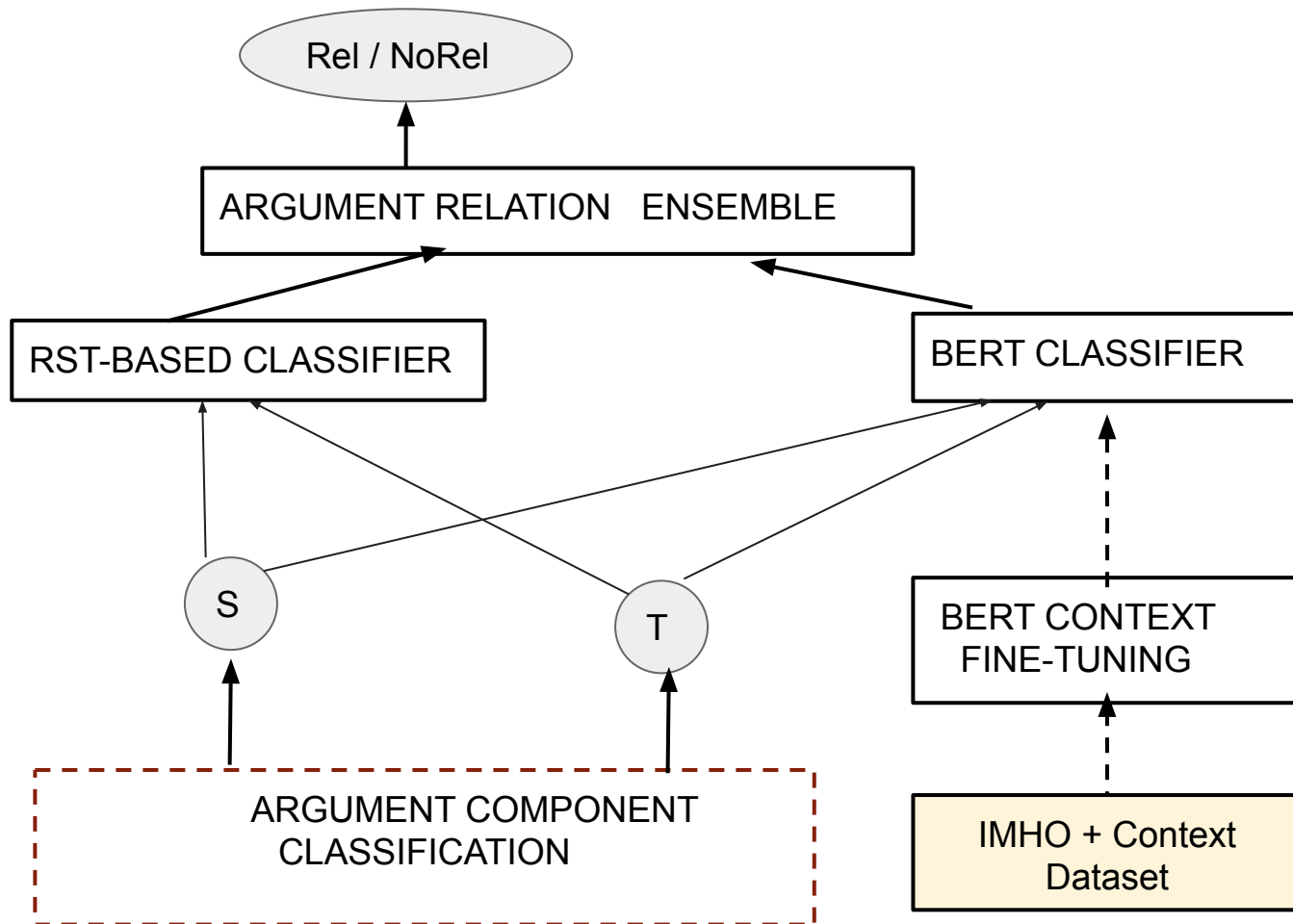
MACRO-LEVEL CONTEXT DATA

- Feature of Reddit: Users can easily **quote** another user's response used to highlight exactly what part of someone's argument a particular user is targeting.
- 97,636 pairs from 19,413 threads
- Language model fine-tuning \longrightarrow sentence level,
 - (quoted text ,following sentence) \longrightarrow distant-labeled inter-post pairs
 - **QR**, for quote-response pairs

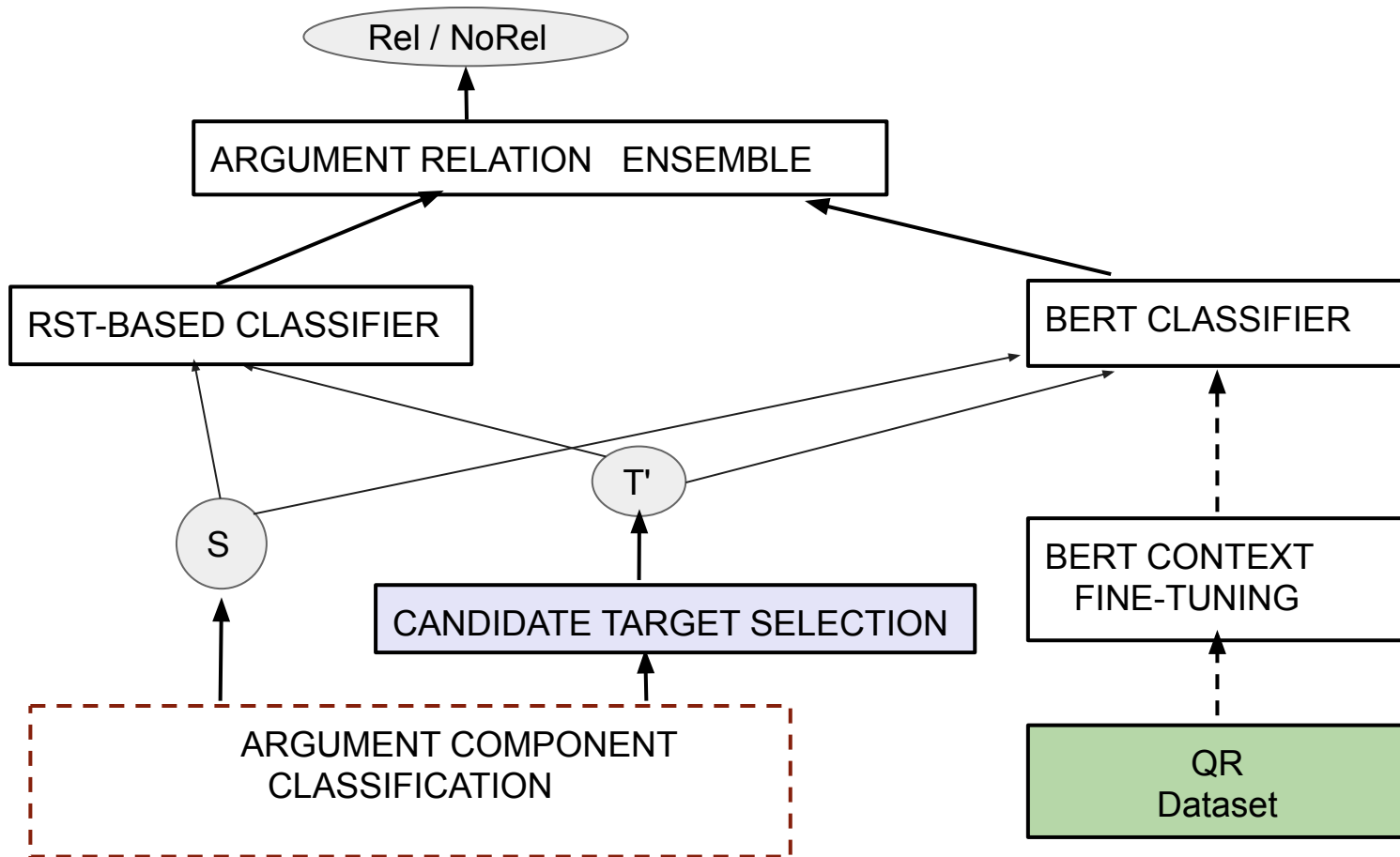
ARGUMENT COMPONENT CLASSIFICATION



INTRA RELATION CLASSIFICATION



INTER-RELATION CLASSIFICATION

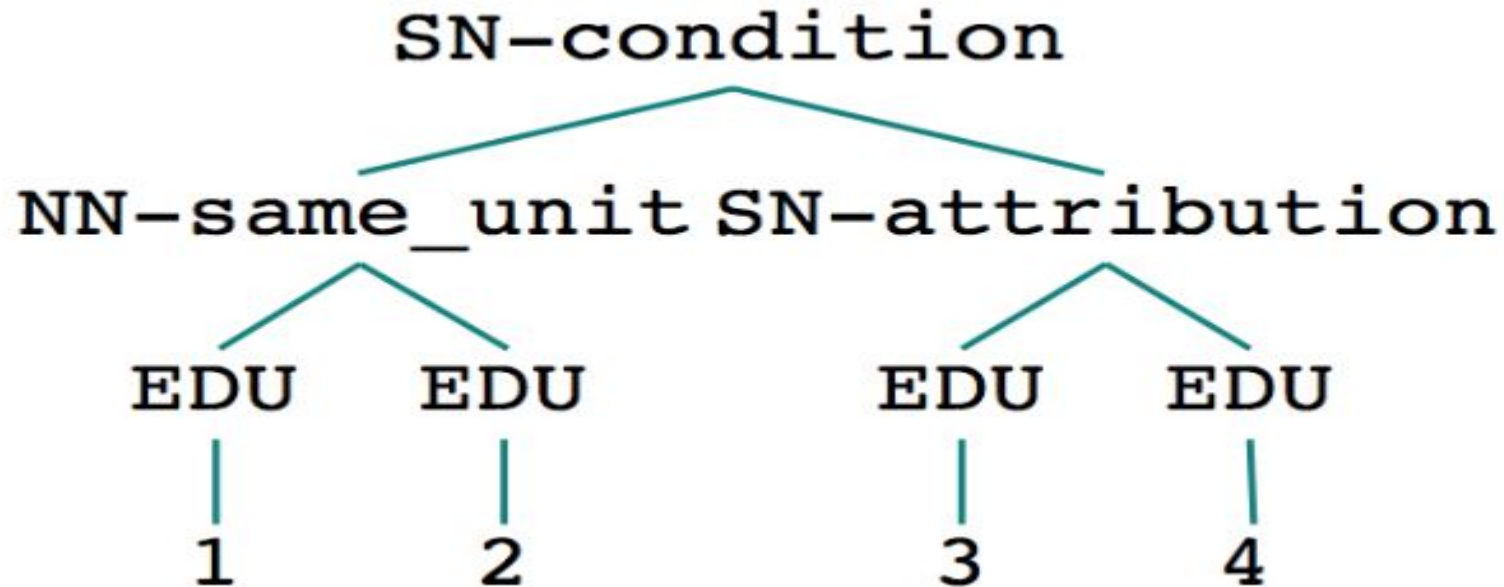


DISCOURSE RELATIONS

Argument Pair where each argument is broken into EDU's
(Elementary Discourse Units)

ARGUMENT 1	ARGUMENT 2
(If existence from your perspective) ₁ (lies solely on your consciousness,) ₂	(after you die) ₃ (it doesn't matter what you left) ₄

DISCOURSE RELATIONS



DISCOURSE RELATIONS

To extract features from a pair of argumentative components

- Concatenate 2 components \longrightarrow single text input
- Use state-of-the-art RST discourse parser (Ji and Eisenstein, 2014)
 - Create parse trees
 - Use predicted discourse relation @ root as a categorical feature
- Use a one-hot encoding of these relations as features and train an XGBoost Classifier and predict Relation (1) vs No-Relation(0)

CANDIDATE TARGET SELECTION

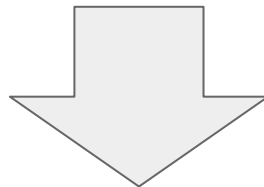
CMV: I think the Paris shooting makes a good case for culture of responsible gun ownership.

....

I also think this would be much better then increase in police numbers and rights as policemen are a very homogeneous group trained to stick together and the danger of even deepening the "not one of us" (pack) mentality and escalation of "police state".

....

**EXTRACTIVE
SUMMARIZER**



CMV: I think the Paris shooting makes a good case for culture of responsible gun ownership.

....

I also think this would be much better then increase in police numbers and rights

CANDIDATE TARGET SELECTION

- Use the **QR** data to train & identify candidate targets using techniques from extractive summarization (BERTSUM *),
- Treat the quoted sentences as gold labels, resulting in 19,413 pairs of document (post) and summary (quoted sentences).
- Thus, for a candidate argument pair $A \rightarrow B$, where B is the quoted sentence, if B is not extracted by the summarization model we predict that there is no relation between A and B.

PIPELINE SUMMARY

- **Argument Component Classification**
- **Intra-relations**
 - Fine tuning (MICRO)
 - Discourse relation
- **Inter-relations**
 - Fine tuning (MACRO)
 - Discourse relation
 - Candidate Selection

ARGUMENT COMPONENT CLASSIFICATION

METHOD	CLAIM	PREMISE	NON ARGUMENT
Stab and Gurevych (2017) + EWE	56.0	65.9	69.6
Morio and Fujita (2018)	54.2	68.5	73.2
Chakrabarty et al. (2019)	57.8	70.8	70.5
BERT Devlin et al.(2019)	62.0	72.2	71.3
IMHO + Context Fine-Tuned BERT	67.1	72.5	75.7

INTRA-TURN RELATION PREDICTION

METHOD	PRECISION		RECALL		F-SCORE	
	GOLD	PRED	GOLD	PRED	GOLD	PRED
All Relations	5.0	-	100.0	-	9.0	-
Morio and Fujita (2018)	10.0	-	48.8	-	16.6	-
BERT Devlin et al (2019)	12.0	11.0	67.0	60.0	20.3	18.5
IMHO Context Fine-Tuned BERT	14.3	13.2	69.0	65.0	23.7	21.8
+ RST Ensemble	16.7	15.5	73.0	70.2	27.2	25.4

*More baselines in paper

INTER-TURN RELATION PREDICTION

METHOD	PRECISION		RECALL		F-SCORE	
	GOLD	PRED	GOLD	PRED	GOLD	PRED
All Relations	5.0	-	100.0	-	9.0	-
Morio and Fujita (2018)	7.6	-	40.0	-	12.7	-
BERT Devlin et al (2019)	8.8	7.9	76.0	70.0	15.8	14.1
QR Context Fine-Tuned BERT	11.0	10.0	75.3	72.5	19.1	17.6
+ RST Ensemble	11.0	12.2	79.0	75.5	21.2	19.1
Candidate Target Selection	18.9	17.5	79.0	74.0	30.5	28.3

*More baselines in paper

IMPACT OF FINE-TUNING

TABLE	PAIR
IMHO	[IMHO, you should not quantify it as good or bad.][Tons of people have monogamous relationships without issue.]
CMV	[how would you even quantify that.][there are many people who want close relationships without romance.]

IMPACT OF FINE-TUNING

QR	<p>[It might be that egalitarians, anti-feminists, MRAs & redpillers, groups that I associate with opposing feminism - might be in fact very distinct & different groups, but I don't know that] [I do see all four of these as distinct groups].</p>
CMV	<p>[I may have a different stance on seeing no difference between companion animals and farm animals.] [I do see distinction between a pet and livestock]</p>

IMPACT OF DISCOURSE RELATIONS

Discourse Relation	Argument 1	Argument 2
Evaluation	The only way your life lacks meaning is if you give it none to begin with	Life is ultimately meaningless and pointless
Antithesis	Joseph was just a regular Jew without the same kind of holiness as the other two	Aren't Mary and Joseph, two holy people especially perfect virgin Mary, both Jews? Wasn't Jesus a Jew?

CONCLUSION

- Show how fine-tuning on data-sets similar to the task of interest is often beneficial
- Show how to use transfer learning by leveraging discourse and dialogue context
- Show structure of the fine-tuning corpus is essential for improved performance on pre-trained language models
- Predictions that take advantage of RST discourse cues are complementary to BERT predictions
- Demonstrated methods to reduce the search space and improve precision

QUESTIONS

tc2896@columbia.edu

chidey@cs.columbia.edu

<https://github.com/tuhinjucse/AMPERSAND-EMNLP2019>